



Some Golden Rules in the attaining to play
Through Bass.

Through Bass is playing Chords with the
Righthand to the Bass Note of the Left, which
Chords are counted from the Bass note, which said note
is always counted one, thus C D E E is the 3 to C

1. The common Chord is the third, fifth and eighth, which may
be took three ways viz. $\frac{3}{4}$ the first is the best, this
Chord is always played where no figure is marked over
the Bass Note, any one of the Common Chord figures, or two
of them, or a b or a# or a 4 signifies the common Chord.

2. The Chord of the 6 is the Common Chord of the third below
or (which is the same) the Common Chord will make the Chord
of the 6 above to the 3 above

3. The Chord of the 7th is the Common Chord the eighth
being made a 9th or being added to the Common Chord

4. The $\frac{2}{4}$ is the Common Chord to the Note above.

5. The $\frac{3}{4}$ is the Common Chord the 3 being made a 4th.

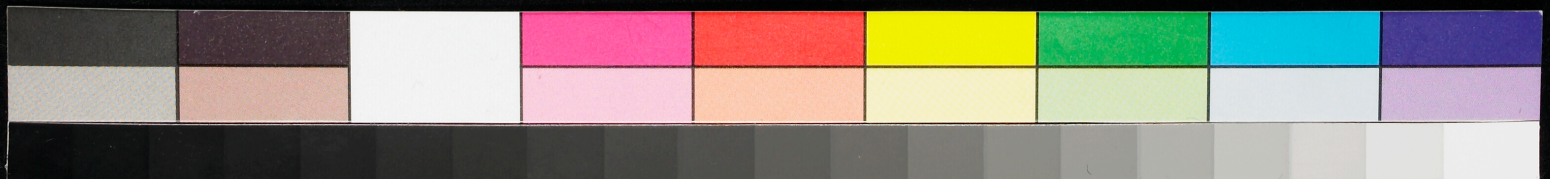
6. The $\frac{5}{4}$ is the Common Chord to the 5th below.

7. The 9th is the Common Chord the 5th being made a 9

8. The $\frac{6}{5}$ is the Common Chord the 6th being added to it

Observe to take the Chords as much as convenient
contrary to the Bass i.e. if your Bass ascends begin
accompanim^t. high If your Bass descends begin
accompanim^t. low that is near your Bass by which
you will avoid taking two fifths or eighths together

天
標





Two Contrary Chords together must be took Contrary to the Bass.

Sixes, if your third is not provided, your accompaniment Bass, you may rise or fall as it does too high or too low. Lasting out y. Right very bad good.

another Example to play full. This J. Bass has three fifths in the accompaniment also three 6ths to the Bass.

when your Bass moves thus you will be oblig'd to make a skip with your right hand on purpose to take the Chords contrary to your Bass.

Ms. of Geo. Fried. Handel
 given to Court Granville Esq
 of Calwich Abbey Staffordshire
 W. Ashbourne Derbyshire.
 as instructions on the rules
 of harmony.

Mem. This is in
 Handel's own handwriting
 He used to frequent
 Calwich Abbey from his
 intimacy with the Granvilles,
 vide his life

